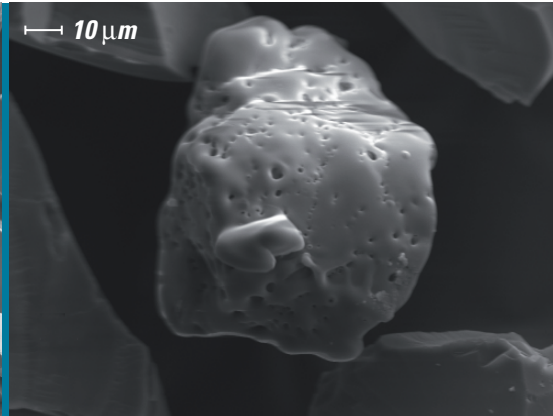
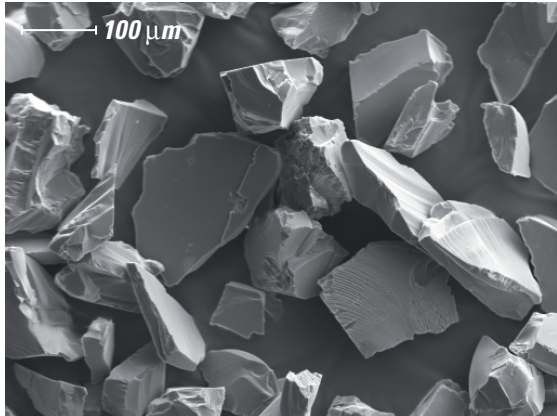


Glass



Quartz

### ***selfFrag Lab - the first commercial laboratory equipment for selective fragmentation.***

*Very short pulsed HV-discharges applied to solids under water cause the material to disaggregate along grain boundaries, inclusions or inhomogeneities. The highly selective fragmentation process of selfFrag Lab liberates morphologically intact minerals while minimizing the production of undesired fines.*

## ***Effect of Plasma Channel***

### ***Melting Phenomena induced by selfFrag Lab A short study***

*Eggenberger, U., Kurz, D. & Eggimann, M.  
Institute of Geology, University Berne, Switzerland*

#### ***Issue / Purpose of Study:***

*selfFrag Lab uses short pulsed high voltage discharges to disaggregate solids. For less than one micro second a plasma channel of one to two microns is induced, resulting in local temperature rises of up to 10'000 °C.*

*What effect does this have on processed samples? This study was conducted to examine the type and frequency of melting phenomena in different solids.*

#### ***Material / Method:***

*Glass and quartz were processed with the selfFrag Lab. SEM investigations were conducted to identify and quantify possible melting phenomena in the grain size fraction 125-250μm.*

#### ***Results / Findings:***

*In glass <1 % of observed particles showed melting phenomena. In quartz only 2 grains out of several thousand were observed with melting phenomena.*

#### ***Conclusion:***

***The impact of short-termed high temperature pulses on liberated grains of the investigated materials is negligible. Affected particles are rare and can be detected for removal.***



*More detailed information is available at [www.selffrag.com](http://www.selffrag.com).*

*selfFrag AG  
Eisenbahnstrasse 47  
4901 Langenthal  
Switzerland*

*Tel. +41 62 916 66 55  
Fax +41 62 916 64 60  
[www.selffrag.com](http://www.selffrag.com)*

*Member of Ammann Group*